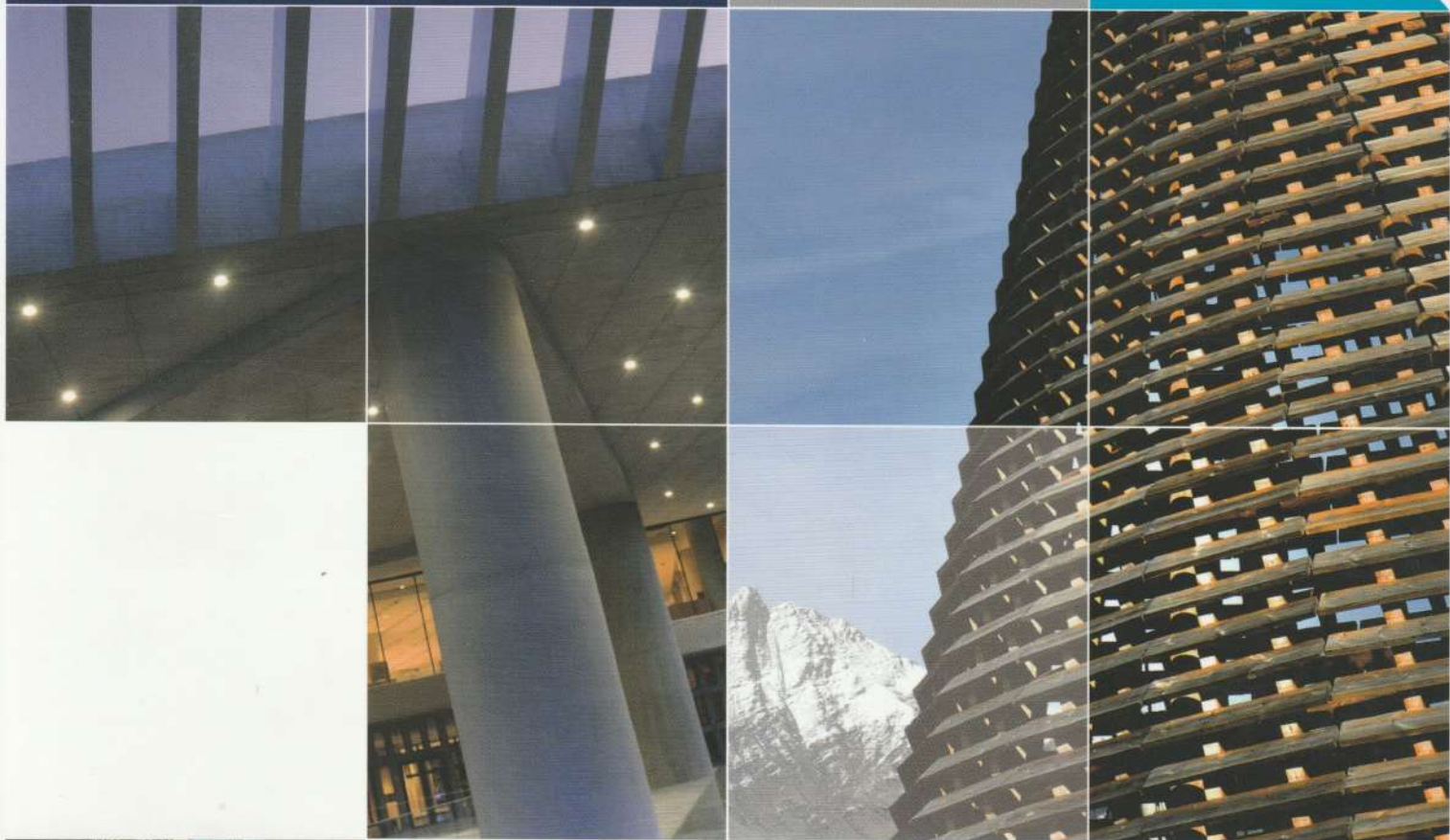
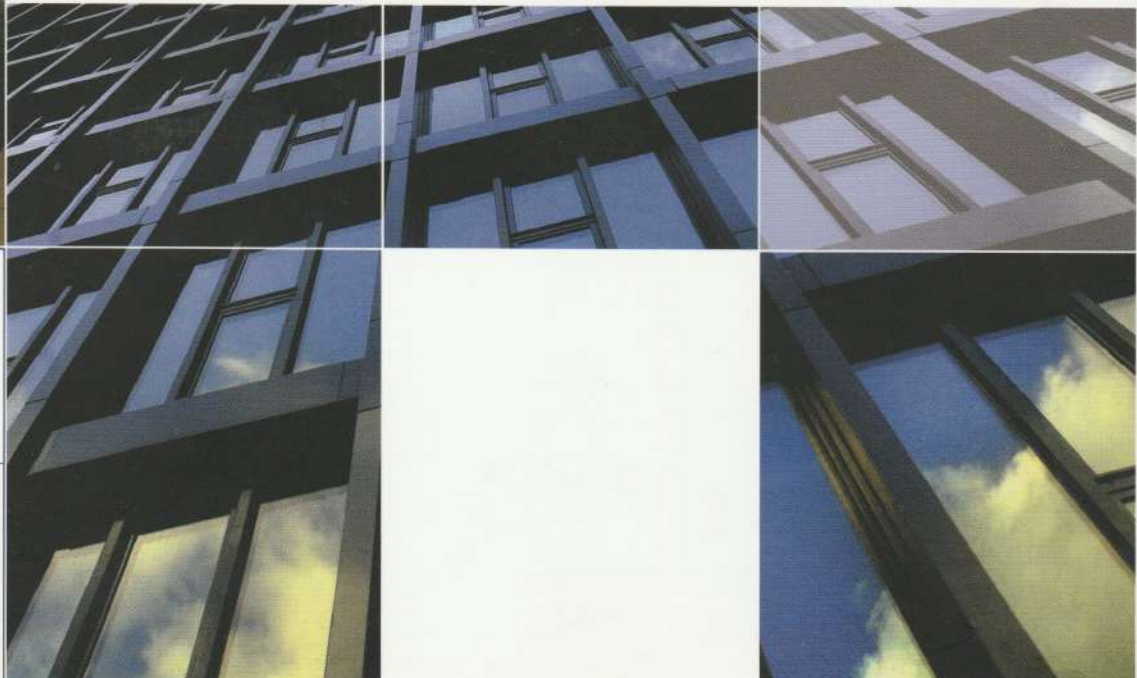
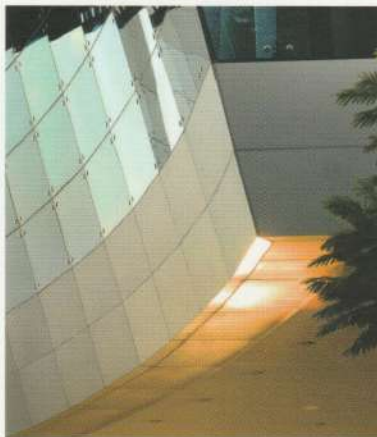


**Interpon**<sup>®</sup>  
powder coatings

EVERY COLOR IS GREEN



**Collection Futura 2010 - 2013**  
**Special Finishes for Architecture**

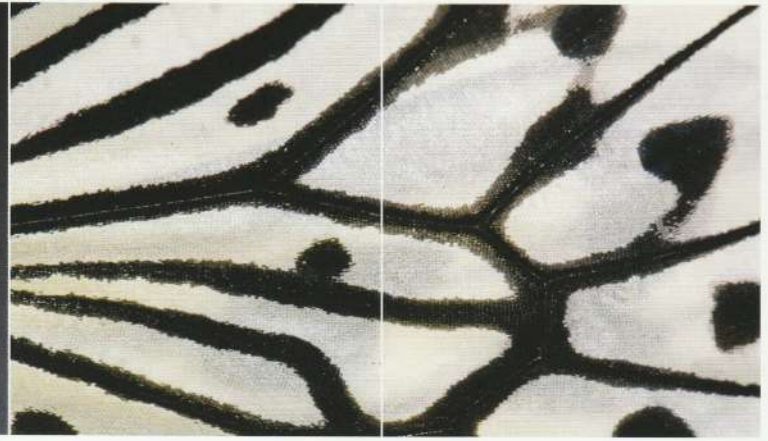


**AkzoNobel**

# Metamorphosis

Scientific progress and technological developments are pushing back the limits of possibility, creating a future-in-the-present. This highly contrasting range oscillates between subtly iridescent white and futuristic black, incorporating smooth and spangled textures for use with satiny or ultra-shiny lacquered finishes.

Collection Futura 2010 - 2013



GRAZALEMA 2525  
YW266F



MENELES 2525  
YW267F



FARO 2525  
YW268F



GHARDAIA 2525  
YW253F



GRIS 2900 Sablé  
YW355F



BLEU 2600 Sablé  
YW361F



BLEU 2700 Sablé  
YW353F



CANON 2525  
YW279F



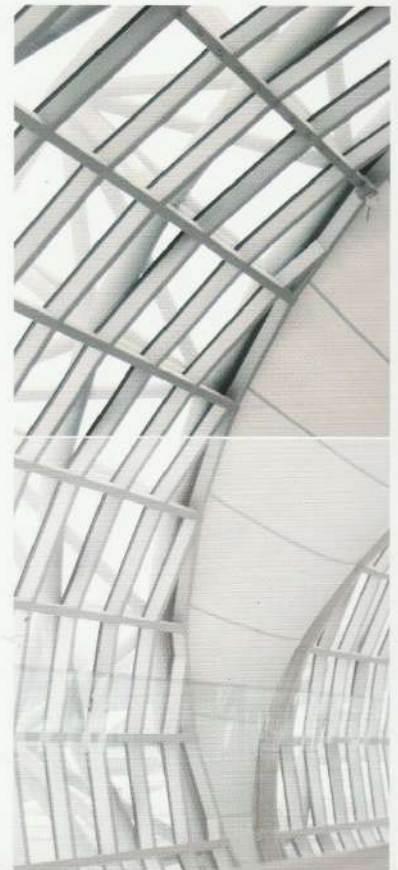
MANGANESE 2525  
YW280F



VIOLET 2100 Sablé  
YW357F



MANGALIA 2525  
YW269F



# Green Attraction

Drawing inspiration from nature and ecology to invent a highly contemporary look. This range embraces new attitudes to the environment to help punctuate our urban landscapes with greenery and other energetic, intense shades. Provides a range of sheens and textures that can be combined with cool flashes.

Collection Futura 2010 - 2013

# Color Fiction

An effervescent, unabashed remix for the new media and internet generation. A search for lightness, practicality and glamorous performance that provide a refreshing addition to ordinary daily life. A composite range of pastels and acid-drop tones.

A collection of smooth finishes in anodized, metallicized or sequined hues.

Collection Futura 2010 - 2013



IRRAWADDY 2525  
YW270F



VERT 2300 Sablé  
YW362F



SANAGA 2525 Sablé  
YW368F



BORA 2525  
YW369F



VERT 2500 Sablé  
YW354F



HALAMHERA 2525  
YW052F



BLEU 2500 Sablé  
YW372F



ATLANTE 2525  
YW282F



SOTHO 2525  
YW275F



HAVANA 2525  
YW251F



PACIFIC AVENUE 2525  
YW276F



GOLDEN BEACH 2525  
YW255F



SAN FRANCISCO 2525  
YW277F



AQUADISIAC 2525  
YW278F

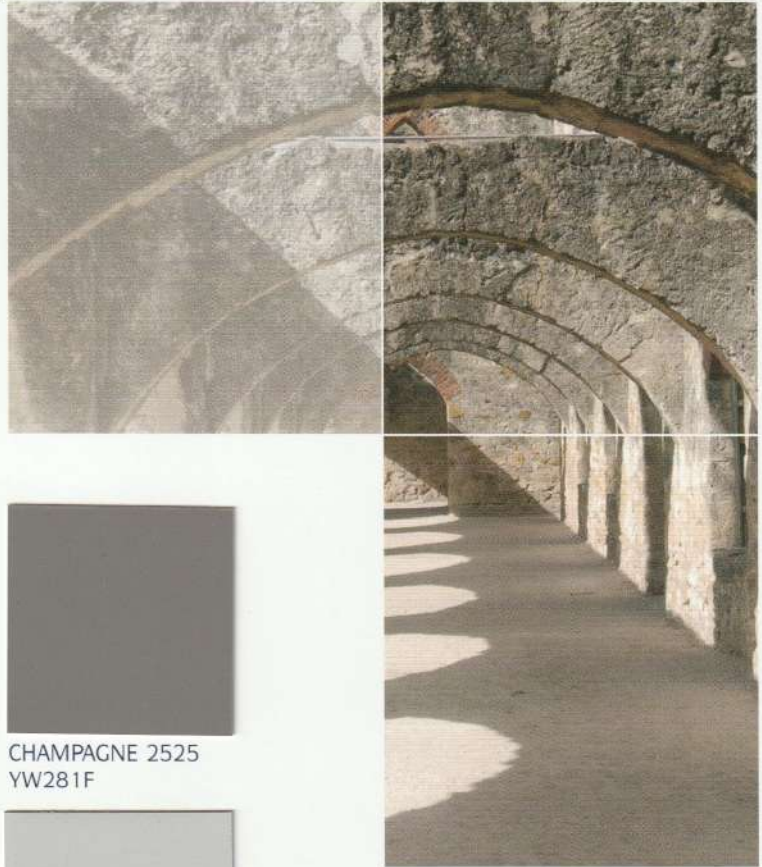




# Neo Elementary

A return for solidity, minimalism and timeless design. Simple beauty and traditional craft know-how merge with the lasting appeal of sand, stone and wood to develop an efficient aesthetic that can be either restrained or radical. Neo elementary represents a range of light, neutral tones with smooth matt and gloss or sandy, granular textures.

## Collection Futura 2010 - 2013



IVOIRE 2100 Sablé  
YW364F



GRIS 2800 Sablé  
YW356F



CHAMPAGNE 2525  
YW281F



TOLEDO 2525  
YW271F



YAZD 2525 Sablé  
YW370F



PORTOBELLO 2525  
YW050F



GRIS 2150 Sablé  
YW365F



SILVER 2525  
YW206F



GALET 2525  
YX050F



GRIS 29770 Chiné  
YX051F



ACIER 2525  
YW150F



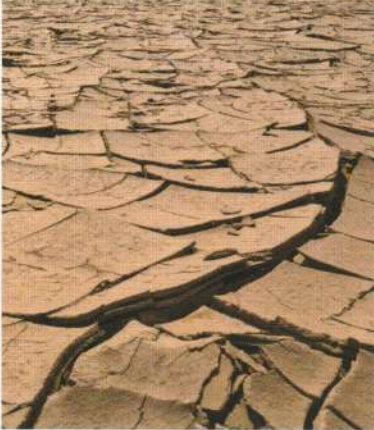
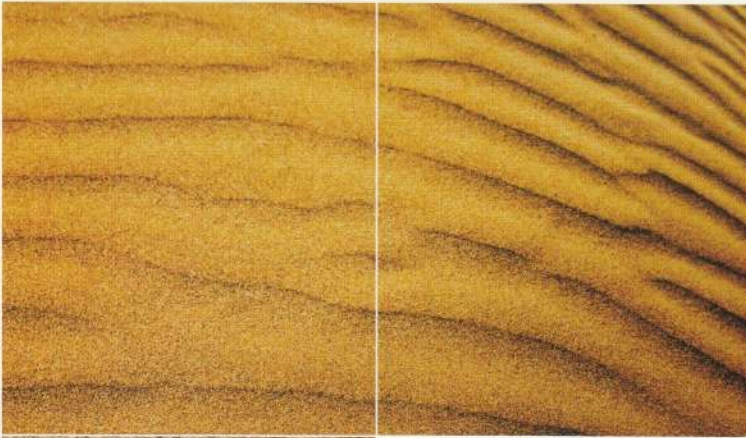
GRIS 2400 Sablé  
YW373F



# Survival World

Combining a spirit of resistance with an industrial wasteland aesthetic that draws on the post-apocalyptic world of video games for inspiration. Old gold, bronze, coppery effects and oxidized black deliver a palette of nuances that are alternatively raw and sophisticated. A range of matt finishes and smooth or sandy surfaces with uneven textures permeated by traces of oxidation.

Collection Futura 2010 - 2013



THAR 2525  
YW272F



JAISALMER 2525  
YW273F



BRONZE 2525  
YW283F



GRIS 2500 Sablé  
YW358F



PYRITE 2525  
YW207F



PLATINE 2525  
YW284F



BRUN 2650 Sablé  
YW366F



NOIR 2200 Sablé  
YW360F



NOIR 2100 Sablé  
YW359F



STARLIGHT 2525 Sablé  
YX353F



MARS 2525 Sablé  
YX355F



ROUGE 2100 Sablé  
YW371F



HIMBA 2525  
YW274F



**BENELUX**

Tel: +32 (0)2 255 22 60

**CZECH REPUBLIC**

Tel: +420 553 692 275

**DENMARK**

Tel: +45 44 66 44 44

**EGYPT**

Tel: +202 3833 1415

**ESTONIA**

Tel: +372 6577 625

**FINLAND**

Tel: +358 (0) 207 501 501

**FRANCE**

Tel: +33 1 60 81 81 81

**GERMANY (ARNSBERG)**

Tel: +49 (0) 2932 62990

**GREECE**

Tel: +30 210 8160 160

**HUNGARY**

Tel: +36 30 629 02 95

**ITALY**

Tel +39 031 345 111

**LATVIA**

Tel: +371 6760 2103

**LITHUANIA**

Tel: +370 6778 7907

**NORWAY**

Tel: +47 66 81 94 00

**POLAND**

Tel: +48 (12) 651 81 91

**PORTUGAL**

Tel: +351 2121 99100

**ROMANIA**

Tel: +40 21 3232 314

**RUSSIA**

Tel: +7 495 411 7350

**SLOVAK REPUBLIC**

Tel: +421 415 640612

**SOUTH AFRICA**

Tel: +27 (0) 11 907 8195

**SPAIN**

Tel: +34 (9) 3 680 6900

**SWEDEN**

Tel: +46 (0) 31 928500

**TURKEY**

Tel: +90 232 252 2700

**UAE**

Tel: +97 14 886 2181

**UK**

Tel: +44 (0) 121 555 1500

[www.interpon.com](http://www.interpon.com)



**Interpon**<sup>®</sup>  
powder coatings

**EVERY COLOR IS GREEN**

All products supplied & technical advice are subject to the standard terms of sale of the AkzoNobel supplying company. Copyright © 2009 Akzo Nobel Powder Coatings Ltd. Interpon is a registered trademark of AkzoNobel. (Issue a - 04/2011).  
Designed by rdw creative. Printed in Italy.